

A) GENERAL NOTES

WORKS TO BE PROVIDED AND INSTALLED BY CONTRACTORS


1. THE CONTRACTORS SHALL BE RESPONSIBLE TO SUPPLY, DESIGN, DELIVERY, INSTALLATION, TESTING AND COMMISSIONING OF THE FORWARD PROCURED EQUIPMENT (FPE) AS SHOWN ON COMPOSITE DRAWINGS.
2. THE CONTRACTORS SHALL CO-ORDINATE ON SITE WITH ALL RELEVANT PARTIES, IN PARTICULAR THE DESIGN AND BUILD CONTRACTOR, FOR THE INSTALLATION.
3. THE CONTRACTORS SHALL SUBMIT ALL FPE INSTALLATION DETAILS TO DESIGN AND BUILD CONTRACTOR FOR CO-ORDINATION AT LEAST 7 DAYS PRIOR TO INSTALLATION.
4. ALL DIMENSIONS SHOWN ON DRAWINGS ARE FOR REFERENCE ONLY. THE CONTRACTORS SHALL BE RESPONSIBLE FOR THE SITE MEASUREMENT TO VERIFY ALL CRITICAL DIMENSIONS BEFORE INSTALLATION AND DELIVERY OF EQUIPMENT.
5. ALL FINAL CONNECTION FROM INTERFACING AND CAPPED OFF POINTS (E.G. ISOLATOR, VALVE, ETC.) TO FPE EQUIPMENT SHALL BE PROVIDED AND INSTALLED BY CONTRACTORS.
6. ALL SERVICES IN DARK SOLID LINE AS SHOWN IN THE DRAWINGS SHALL BE PROVIDED AND INSTALLED BY THE CONTRACTORS UNLESS OTHERWISE SPECIFIED.
7. SETTING OUT OF B.S. PROVISIONS AND BUILDER'S WORKS FOR EQUIPMENT IS FOR INDICATION ONLY. EXACT LOCATION SHALL BE COORDINATED WITH THE DESIGN AND BUILD CONTRACTOR & VERIFIED ON SITE PRIOR TO INSTALLATION.
8. THE CONTRACTORS SHALL BE RESPONSIBLE TO SEAL UP ALL AROUND OF THE EQUIPMENT FOR AIR TIGHTNESS INCLUDING AIR TIGHT CEILING OPENING, CEILING JUNCTION, HANGER WALL, SUNKEN SLAB, INTERFACE BETWEEN FLOOR FINISH AND EQUIPMENT, ETC. IF APPLICABLE.
9. THE CONTRACTORS SHALL BE RESPONSIBLE TO SUPPLY AND INSTALL ALL REQUIRED MATERIAL, FITTING, CABLES, PIPEWORKS, DUCTWORKS, ETC. FOR CONNECTING THE EQUIPMENT TO THE CORRESPONDING BUILDING SERVICES PROVISION BY DESIGN AND BUILD CONTRACTOR AND DESIGN AND BUILD CONTRACTOR'S SUBCONTRACTORS AS SHOWN ON THE COMPOSITE DRAWINGS. ANY REVISION OR ADDITIONAL WORKS ON THE BUILDING SERVICES PROVISIONS, INCLUDING BUT NOT LIMITED TO FIRE SERVICE, LIGHTING, AIR-CONDITIONING & MECHANICAL VENTILATION, DRAINAGE, WATER SUPPLY POINT, MEDICAL GAS OUTLET, ETC., SHALL BE RESPONSIBLE BY CONTRACTORS TO ENSURE THE DESIGN PERFORMANCE WOULD BE NOT AFFECTED AND DEGRADED AFTER INSTALLATION OF EQUIPMENT.
10. THE CONTRACTORS SHALL ENSURE THAT THEIR EQUIPMENT CAN BE DELIVERED TO SITE UPON COORDINATION AND AGREEMENT WITH DESIGN AND BUILD CONTRACTOR ON THE DELIVERY ROUTE AND WORKING SCHEDULE. ALL COSTS FOR ADDITIONAL OR MODIFICATION WORKS RELATED TO BUILDER WORKS SHALL BE BORNE BY THE CONTRACTORS.
11. ALL EQUIPMENT WALL AND FALSE CEILING PANEL CUT OFF, PIPE SLEEVE, SEALING AND MAKE GOOD WORKS SHALL BE DESIGNED, PROVIDED & INSTALLED BY THE CONTRACTORS.
12. SUPPORTING FRAME FOR FPE EQUIPMENT SHALL BE DESIGNED, PROVIDED & INSTALLED BY THE CONTRACTORS, UNLESS OTHERWISE SPECIFIED.
13. THE CONTRACTORS SHALL BE RESPONSIBLE FOR COVER UP ALL CABLE CONTAINMENT (TRUNKING & JUNCTION).
14. THE CONTRACTORS SHALL BE RESPONSIBLE TO DESIGN THE PROVISION FOR MAINTENANCE (E.G. MOUNTING HOOD, ACCESS PANEL, ACCESS DOOR, ETC).
15. ALL FINAL CONNECTION FROM ISOLATION / GATE VALES AND CAPPED-OFF POINTS TO FPE EQUIPMENT WOULD BE PROVIDED AND INSTALLED BY THE CONTRACTORS.
16. THE CONTRACTORS SHALL BE RESPONSIBLE TO ENSURE THEIR INSTALLATION TO COMPLY WITH ALL RELEVANT REGULATION, GUIDELINE, STANDARD, ETC.
17. ALL TEMPORARY WORKING PLATFORM SUCH AS SCAFFOLDING AND MOBILE PLATFORM, ETC. FOR EQUIPMENT INSTALLATION SHALL BE PROVIDED BY THE CONTRACTORS. SAFE WORKING PLATFORM TO THE SATISFACTION OF THE DESIGN AND BUILD CONTRACTOR TO BE PROVIDED BY THE CONTRACTORS.
18. EQUIPOTENTIAL BONDING FOR MEDICAL EQUIPMENT SHOULD BE FINISHED BY THE CONTRACTORS.
19. IF ANY WATER CONNECTION FROM BUILDING CENTRAL WATER SUPPLY SYSTEM, THE CONTRACTORS SHALL EMPLOY LICENSED PLUMBER TO CARRY OUT ALL SUBMISSION (E.G WWO 542 AND WWO46, ETC) AND INSTALLATION / WORKS TO FULFILL WSD REQUIREMENTS.
20. THE CONTRACTORS SHALL BE RESPONSIBLE FOR ALL STATUTORY SUBMISSIONS FOR ANY REVISION OR ADDITIONAL WORKS ON SITE TO SUIT THE INSTALLATION AND DAILY OPERATION OF THE EQUIPMENT IF REQUIRED.
21. THE CONTRACTOR SHALL BE RESPONSIBLE FOR SEALING UP THE RESERVED WALL OPENING AND PROVIDING AND INSTALLING THE APPROPRIATE FIRE BARRIERS, FIRE-STOP SEALANTS, FIRE-STOP BLOCKS, ETC. AS NECESSARY TO MAINTAIN THE FIRE RESISTANCE RATING, WHERE APPLICABLE.
22. THE CONTRACTORS SHALL BE RESPONSIBLE TO RE-PROVIDE, REINSTATE AND MAKE GOOD OF THE FIRE BARRIERS, FIRE-STOP SEALANTS, FIRE-STOP BLOCKS, ETC. FOR FIRE COMPARTMENTATION, FIRE RATED ENCLOSURE, CABLE TRAYS, PIPES AND OTHER PENETRATIONS REQUIRED FOR EQUIPMENT INSTALLATION TO MAINTAIN THE FIRE RESISTANCE RATING, WHERE APPLICABLE.
23. THE DETAIL OF WORKS DEMARCATION BETWEEN THE CONTRACTOR AND THE DESIGN AND BUILD CONTRACTOR SHALL BE REFERRED TO THE LAYOUT AND ELEVATION DRAWINGS.

B) LEGEND

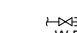
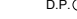
ELECTRICAL INSTALLATION

-  ONE GANG/ TWO GANG SWITCHED 13A SOCKET OUTLET WITH PILOT LIGHT (NORMAL POWER) (MOUNTING LEVEL ABOVE BENCH AT 1150mmAFFL, UNLESS OTHERWISE SPECIFIED)
-  ONE GANG/ TWO GANG SWITCHED 13A SOCKET OUTLET WITH PILOT LIGHT (ESSENTIAL POWER) (MOUNTING LEVEL ABOVE BENCH AT 1150mmAFFL, UNLESS OTHERWISE SPECIFIED)
-  ONE GANG/ TWO GANG SWITCHED 13A WEATHERPROOF SOCKET OUTLET, IP56 (NORMAL POWER) (MOUNTING LEVEL ABOVE BENCH AT 1150mmAFFL, UNLESS OTHERWISE SPECIFIED)
-  ONE GANG/ TWO GANG SWITCHED 13A WEATHERPROOF SOCKET OUTLET, IP56 (ESSENTIAL POWER) (MOUNTING LEVEL ABOVE BENCH AT 1150mmAFFL, UNLESS OTHERWISE SPECIFIED)
-  ISOLATOR (RATING AS INDICATED), TPN UNLESS OTHERWISE SPECIFIED (NORMAL POWER) (MOUNTING LEVEL AT 300mm AFCL, UNLESS OTHERWISE SPECIFIED)
-  ISOLATOR (RATING AS INDICATED), TPN UNLESS OTHERWISE SPECIFIED (ESSENTIAL POWER) (MOUNTING LEVEL AT 300mm AFCL, UNLESS OTHERWISE SPECIFIED)
-  DP SWITCHED 13A FUSED SPUR UNIT WITH PILOT LIGHT (MOUNTING LEVEL AT 300mm AFCL, UNLESS OTHERWISE SPECIFIED)
"XX" DENOTES THE POWER SUPPLY, E FOR ESSENTIAL, U FOR UPS, INTEGRATED WITH PILOT LIGHT FOR SOCKET AND FUSE SPUR UNIT

EXTRA LOW VOLTAGE INSTALLATION

-  IEC60670-1 BASE BOX W/ BLANK PLATE COVER C/W 1 NO. Ø25mm G.I. CONDUIT AND DRAW WIRE BY DESIGN AND BUILD CONTRACTOR, DATA PORT W/ COVER PLATE C/W DATA CABLE BY OTHERS (I.E. IT VENDOR, OTHER SYSTEM VENDOR)
D1: CMH IT SYSTEMS
D2: F&E SYSTEMS
D3: BUILDING & OTHER RELATED SYSTEMS

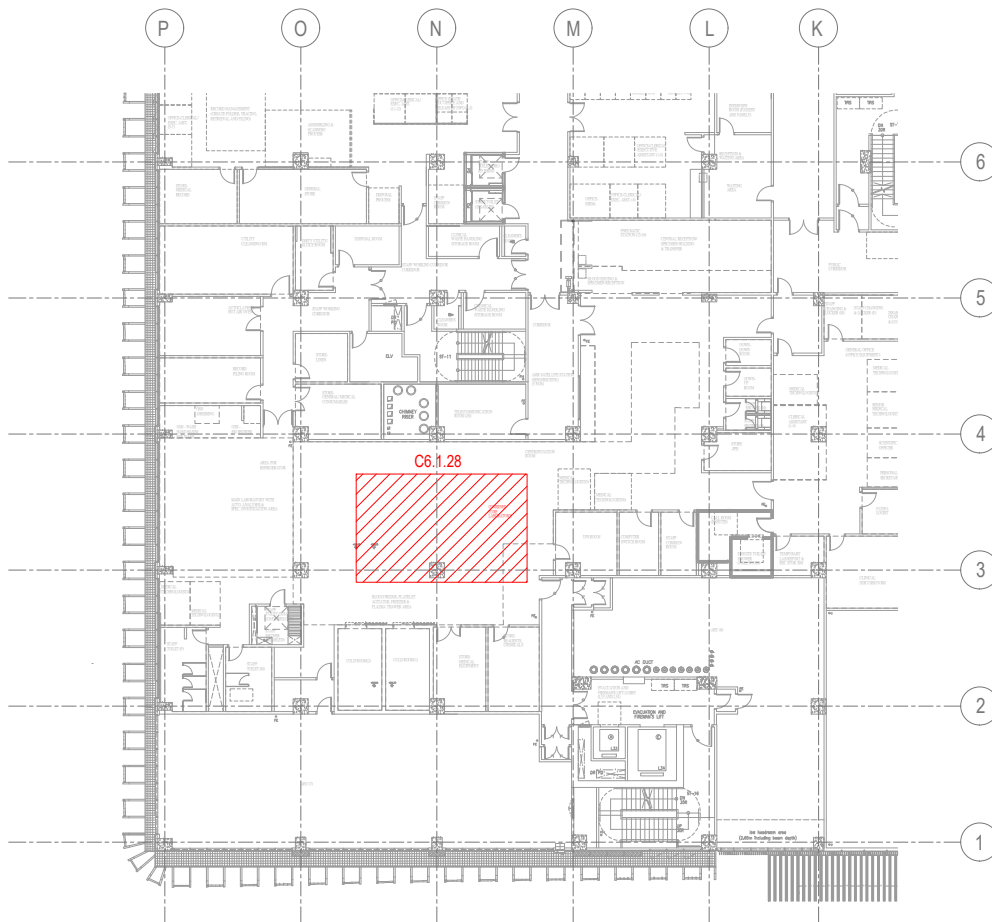
PLUMBING & DRAINAGE INSTALLATION

-  COLD WATER SUPPLY PIPE C/W GATE VALVE (SIZE AS INDICATED ON DRAWING)
-  DRAIN POINT (SIZE AS INDICATED ON DRAWING)

C) ROOM CONDITIONS

ROOM NAME: COMBINED CORE LABORATORY (C6.1.28)

- a) TEMPERATURE IN SUMMER & WINTER : 22°C
- b) HUMIDITY IN SUMMER & WINTER : 50%RH
- c) ILLUMINATION LEVEL : 500LUX
- d) CEILING HEIGHT : 2600mm
- e) CEILING FINISH : ACOUSTIC ALUMINUM TILE SUSPENDED CEILING (FOR NON-CLINICAL AREA)
- f) WALL FINISH : WATER-BASED (ANTI-MOULD) EMULSION PAINT SYSTEM
- g) FLOOR FINISH : HOMOGENEOUS VINYL SHEET (NON-SLIP) ON SCREED
- h) SKIRTING FINISH : VINYL-COVED WITH ALUMINUM EDGE
- i) FLOOR SLAB IMPOSED LOAD : 5kPa



3/F C6.1.28 COMBINED CORE LABORATORY KEY PLAN
SCALE 1 : 500

COMPOSITE DRAWING SUBMISSION


REVISIONS		
NUMBER	DESCRIPTION	DATE
0	FIRST SUBMISSION	APR 2023
1	SECOND SUBMISSION	AUG 2023
2	THIRD SUBMISSION	DEC 2024


MAIN CONTRACTOR:
 中國建築工程(香港)有限公司
CHINA STATE CONSTRUCTION ENGINEERING (HONG KONG) LIMITED

ARCHITECT
 王歐陽(香港)有限公司
WONG & OUYANG (HK) LTD

STRUCTURAL ENGINEER
 SWW

BUILDING SERVICES ENGINEER
 WSP

LANDSCAPE DESIGNER
 ADI

INTERIOR DESIGNER
 V

MODULAR CONSTRUCTION DESIGNER
 中國建龍建築科技有限公司
CHINA STATE BUILDING CONSTRUCTION TECHNOLOGY COMPANY LIMITED

MEDICAL CONSULTANT
 中國國際醫療產業發展有限公司
CHINA STATE CONSTRUCTION INTL. MEDICAL INDUSTRY DEVELOPMENT CO., LTD.

CONTRACT NO.
SS K514

PROGRAMME NO.
001MZ & 116MH

PROJECT
DESIGN AND CONSTRUCTION OF CHINESE MEDICINE HOSPITAL AND GOVERNMENT CHINESE MEDICINES TESTING INSTITUTE IN TSEUNG KWAN O


DRAWING TITLE
COMPOSITE DRAWING OF LABORATORY AUTOMATION SYSTEM
GENERAL NOTES, LEGEND AND KEY PLAN

DRAWN BY RW/NL DATE AUG2023

CHECKED BY KT DATE AUG2023

SCALE N.T.S. JOB NO. BJY

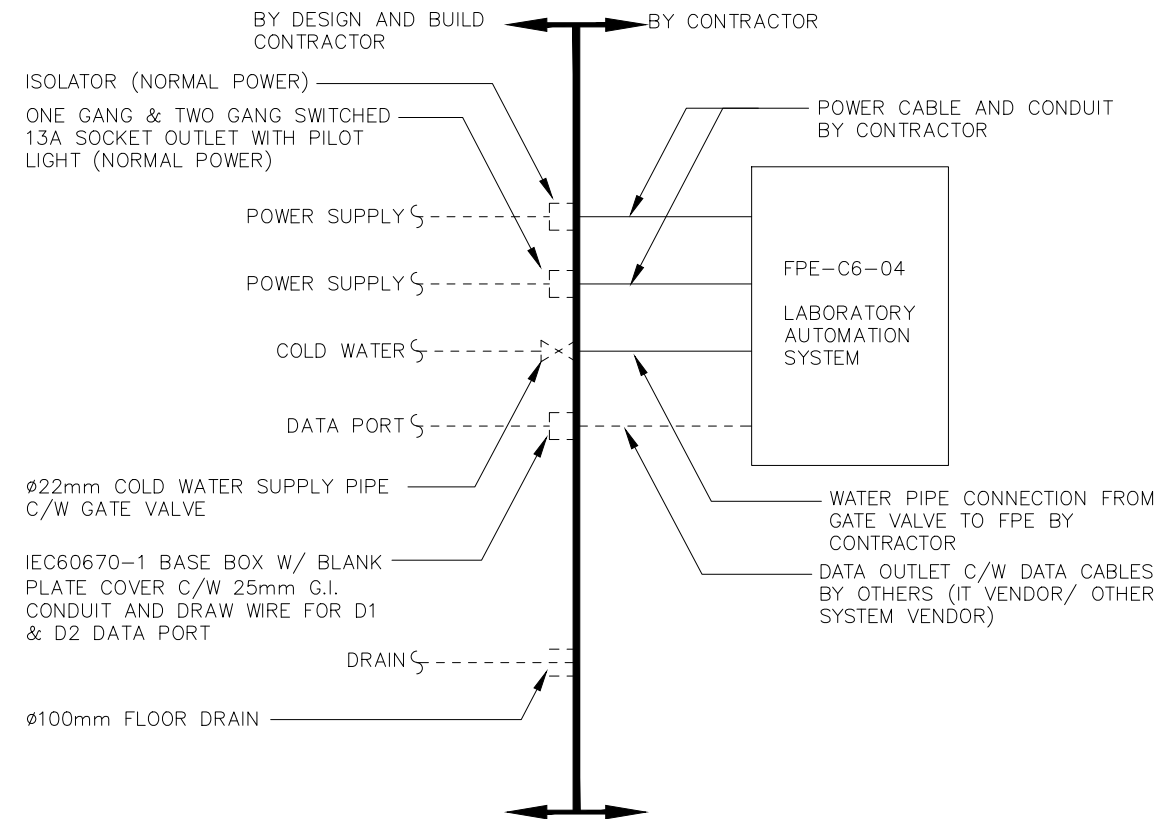
DRAWING NUMBER REV
BS/BS15/A/COM/FPE-C6-04/001 2

 ARCHITECTURAL SERVICES DEPARTMENT

D) EQUIPMENT SCHEDULE AND DESIGN AND BUILD CONTRACTOR'S PROVISIONS

FPE ITEM NO	DESCRIPTION (QUANTITY)	DESIGN AND BUILD CONTRACTOR'S PROVISIONS	FLOOR / AREA (SOA REF.)
FPE-C6-04	LABORATORY AUTOMATION SYSTEM (QTY: 1 SET)	1. POWER: 2 x 32A TPN ISOLATOR (NORMAL POWER); 3 x ONE GANG SWITCHED 13A SOCKET OUTLET WITH PILOT LIGHT (NORMAL POWER); 16 x TWO GANG SWITCHED 13A SOCKET OUTLET WITH PILOT LIGHT (NORMAL POWER) 2. DATA PORT: 7 x IEC60670-1 BASE BOX W/ BLANK PLATE COVER C/W 25mm G.I. CONDUIT AND DRAW WIRE FOR D1 DATA PORT; 9 x IEC60670-1 BASE BOX W/ BLANK PLATE COVER C/W 25mm G.I. CONDUIT AND DRAW WIRE FOR D2 DATA PORT 3. COLD WATER: 3 x ϕ 22mm COLD WATER SUPPLY PIPE C/W GATE VALVE 4. DRAIN: 4 x ϕ 100mm FLOOR DRAIN	3/F COMBINED CORE LABORATORY (C6.1.28)

E) DEMARCATION DIAGRAM:



F) DRAWING LIST

DRAWING NO.	REVISION	DRAWING TITLE
BS/8515/A/COM/FPE-C6-04/001	2	COMPOSITE DRAWING OF LABORATORY AUTOMATION SYSTEM GENERAL NOTES, LEGEND AND KEY PLAN
BS/8515/A/COM/FPE-C6-04/002	3	COMPOSITE DRAWING OF LABORATORY AUTOMATION SYSTEM DEMARCATION DIAGRAM, EQUIPMENT SCHEDULE, DESIGN AND BUILD CONTRACTOR'S PROVISIONS AND DRAWING LIST
BS/8515/A/COM/FPE-C6-04/201	2	COMPOSITE DRAWING OF LABORATORY AUTOMATION SYSTEM 3F LAYOUT PLAN
BS/8515/A/COM/FPE-C6-04/901	3	COMPOSITE DRAWING OF LABORATORY AUTOMATION SYSTEM ELEVATION A

COMPOSITE DRAWING SUBMISSION

REVISIONS		
NUMBER	DESCRIPTION	DATE
0	FIRST SUBMISSION	APR 2023
1	SECOND SUBMISSION	AUG 2023
2	THIRD SUBMISSION	DEC 2024
3	FOURTH SUBMISSION	JAN 2025

MAIN CONTRACTOR:
 中國建築工程(香港)有限公司
 CHINA STATE CONSTRUCTION ENGINEERING HONG KONG LIMITED

ARCHITECT
 王歐陽(香港)有限公司
 WONG & OUYANG (HK) LTD

STRUCTURAL ENGINEER
 SW

BUILDING SERVICES ENGINEER
 WSP

LANDSCAPE DESIGNER
 ADI

INTERIOR DESIGNER
 V

MODULAR CONSTRUCTION DESIGNER
 中國海龍建築科技有限公司
 CHINA STATE HAI DONG CONSTRUCTION TECHNOLOGY COMPANY LIMITED

MEDICAL CONSULTANT
 中遠國際醫藥產業發展有限公司
 CHINA STATE CONSTRUCTION INTL MEDICAL INDUSTRY DEVELOPMENT CO., LTD.

CONTRACT NO.
SS K514

PROGRAMME NO.
001MZ & 116MH

PROJECT
DESIGN AND CONSTRUCTION OF CHINESE MEDICINE HOSPITAL AND GOVERNMENT CHINESE MEDICINES TESTING INSTITUTE IN TSEUNG KWAN O

DRAWING TITLE
COMPOSITE DRAWING OF LABORATORY AUTOMATION SYSTEM DEMARCATION DIAGRAM, EQUIPMENT SCHEDULE, DESIGN AND BUILD CONTRACTOR'S PROVISIONS AND DRAWING LIST

DRAWN BY: RW/KL DATE: AUG2023

CHECKED BY: KT DATE: AUG2023

SCALE: N.T.S. JOB NO.: BJY

DRAWING NUMBER	REV
BS/8515/A/COM/FPE-C6-04/002	3

ARCHITECTURAL SERVICES DEPARTMENT

REVISIONS		
NUMBER	DESCRIPTION	DATE
0	FIRST SUBMISSION	APR 2023
1	SECOND SUBMISSION	AUG 2023
2	THIRD SUBMISSION	DEC 2024

FROM TOP TO BOTTOM
(BY DESIGN AND BUILD CONTRACTOR AT 300mm AFCL FOR CONTRACTOR'S FURTHER CONNECTION TO EQUIPMENT, EXACT CONNECTION DETAILS TO BE PROPOSED BY CONTRACTOR)
5 x TWO GANG SWITCHED 13A SOCKET OUTLET WITH PILOT LIGHT (NORMAL POWER)

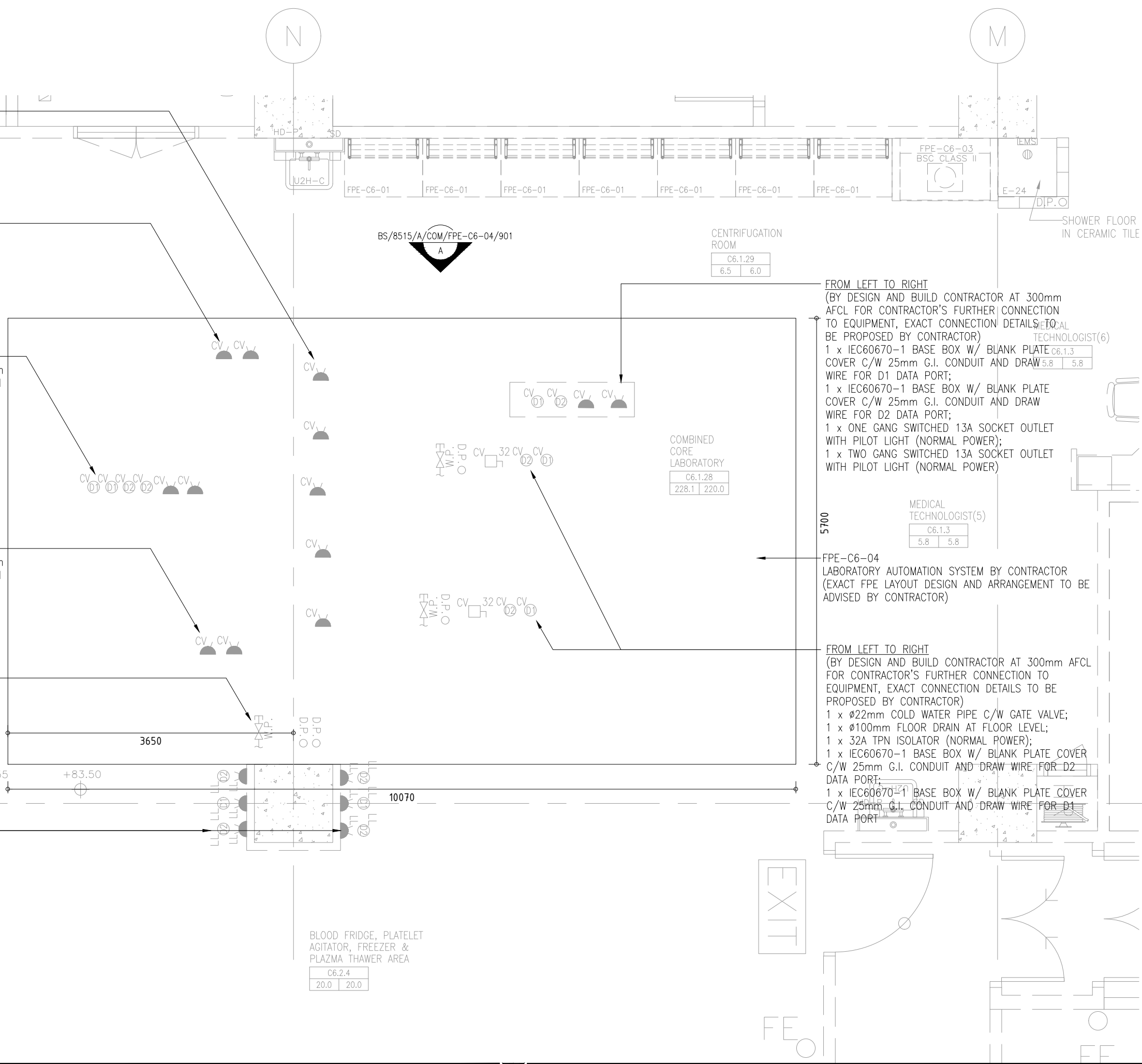
FROM LEFT TO RIGHT
(BY DESIGN AND BUILD CONTRACTOR AT 300mm AFCL FOR CONTRACTOR'S FURTHER CONNECTION TO EQUIPMENT, EXACT CONNECTION DETAILS TO BE PROPOSED BY CONTRACTOR)
1 x ONE GANG SWITCHED 13A SOCKET OUTLET WITH PILOT LIGHT (NORMAL POWER);
1 x TWO GANG SWITCHED 13A SOCKET OUTLET WITH PILOT LIGHT (NORMAL POWER)

FROM LEFT TO RIGHT
(BY DESIGN AND BUILD CONTRACTOR AT 300mm AFCL FOR CONTRACTOR'S FURTHER CONNECTION TO EQUIPMENT, EXACT CONNECTION DETAILS TO BE PROPOSED BY CONTRACTOR)
2 x IEC60670-1 BASE BOX W/ BLANK PLATE COVER C/W 25mm G.I. CONDUIT AND DRAW WIRE FOR D1 DATA PORT;
2 x IEC60670-1 BASE BOX W/ BLANK PLATE COVER C/W 25mm G.I. CONDUIT AND DRAW WIRE FOR D2 DATA PORT;
2 x TWO GANG SWITCHED 13A SOCKET OUTLET WITH PILOT LIGHT (NORMAL POWER)

FROM LEFT TO RIGHT
(BY DESIGN AND BUILD CONTRACTOR AT 300mm AFCL FOR CONTRACTOR'S FURTHER CONNECTION TO EQUIPMENT, EXACT CONNECTION DETAILS TO BE PROPOSED BY CONTRACTOR)
1 x ONE GANG SWITCHED 13A SOCKET OUTLET WITH PILOT LIGHT (NORMAL POWER);
1 x TWO GANG SWITCHED 13A SOCKET OUTLET WITH PILOT LIGHT (NORMAL POWER)

FROM LEFT TO RIGHT
(BY DESIGN AND BUILD CONTRACTOR)
1 x Ø22mm COLD WATER PIPE C/W GATE VALVE (AT AFFL 450mm);
2 x Ø100mm FLOOR DRAIN

FROM LEFT TO RIGHT
(ALL BY DESIGN AND BUILD CONTRACTOR AT 450mm AFFL)
2 x IEC60670-1 BASE BOX W/ BLANK PLATE COVER C/W 25mm G.I. CONDUIT AND DRAW WIRE FOR D2 DATA PORT;
1 x IEC60670-1 BASE BOX W/ BLANK PLATE COVER C/W 25mm G.I. CONDUIT AND DRAW WIRE FOR D1 DATA PORT;
3 x TWO GANG SWITCHED 13A SOCKET OUTLET (NORMAL POWER)



FROM LEFT TO RIGHT
(BY DESIGN AND BUILD CONTRACTOR AT 300mm AFCL FOR CONTRACTOR'S FURTHER CONNECTION TO EQUIPMENT, EXACT CONNECTION DETAILS TO BE PROPOSED BY CONTRACTOR)
1 x IEC60670-1 BASE BOX W/ BLANK PLATE COVER C/W 25mm G.I. CONDUIT AND DRAW WIRE FOR D1 DATA PORT;
1 x IEC60670-1 BASE BOX W/ BLANK PLATE COVER C/W 25mm G.I. CONDUIT AND DRAW WIRE FOR D2 DATA PORT;
1 x ONE GANG SWITCHED 13A SOCKET OUTLET WITH PILOT LIGHT (NORMAL POWER);
1 x TWO GANG SWITCHED 13A SOCKET OUTLET WITH PILOT LIGHT (NORMAL POWER)

FPE-C6-04
LABORATORY AUTOMATION SYSTEM BY CONTRACTOR (EXACT FPE LAYOUT DESIGN AND ARRANGEMENT TO BE ADVISED BY CONTRACTOR)

FROM LEFT TO RIGHT
(BY DESIGN AND BUILD CONTRACTOR AT 300mm AFCL FOR CONTRACTOR'S FURTHER CONNECTION TO EQUIPMENT, EXACT CONNECTION DETAILS TO BE PROPOSED BY CONTRACTOR)
1 x Ø22mm COLD WATER PIPE C/W GATE VALVE;
1 x Ø100mm FLOOR DRAIN AT FLOOR LEVEL;
1 x 32A TPN ISOLATOR (NORMAL POWER);
1 x IEC60670-1 BASE BOX W/ BLANK PLATE COVER C/W 25mm G.I. CONDUIT AND DRAW WIRE FOR D2 DATA PORT;
1 x IEC60670-1 BASE BOX W/ BLANK PLATE COVER C/W 25mm G.I. CONDUIT AND DRAW WIRE FOR D1 DATA PORT

MAIN CONTRACTOR:
中國建築工程(香港)有限公司
CHINA STATE CONSTRUCTION ENGINEERING (HONG KONG) LIMITED

ARCHITECT:
王歐陽(香港)有限公司
WONG & OUYANG (H.K.) LTD.

STRUCTURAL ENGINEER:
SW

BUILDING SERVICES ENGINEER:
MSP

LANDSCAPE DESIGNER:
ADI

INTERIOR DESIGNER:
V

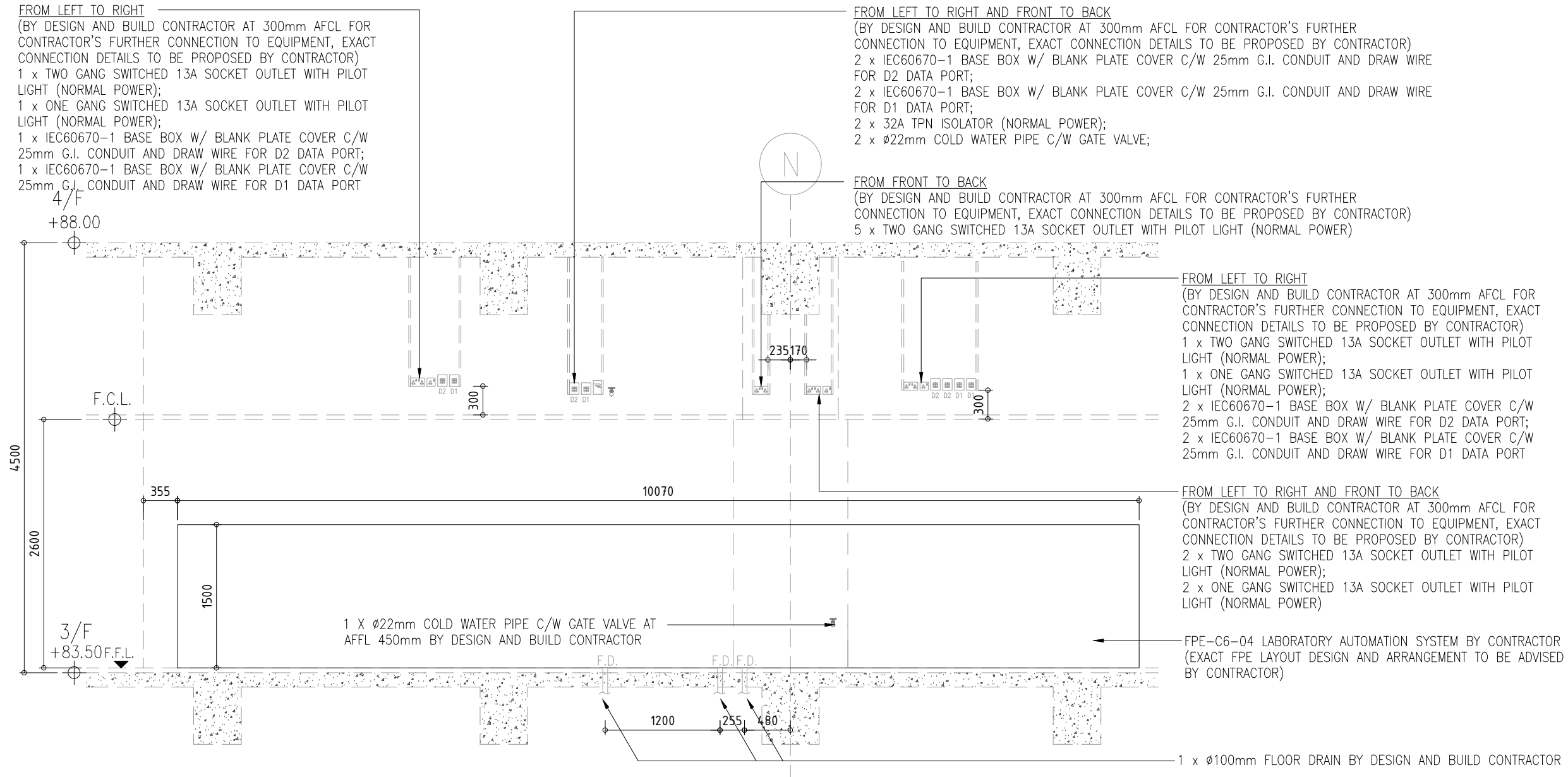
MODULAR CONSTRUCTION DESIGNER:
中國宏龍建築科技有限公司
CHINA STATE CONSTRUCTION TECHNOLOGY COMPANY LIMITED

MEDICAL CONSULTANT:
中國國際醫療產業發展有限公司
CHINA STATE CONSTRUCTION INT'L MEDICAL INDUSTRY DEVELOPMENT CO., LTD.

CONTRACT NO. SS K514
PROGRAMME NO. 001MZ & 116MH
PROJECT DESIGN AND CONSTRUCTION OF CHINESE MEDICINE HOSPITAL AND GOVERNMENT CHINESE MEDICINES TESTING INSTITUTE IN TSEUNG KWAN O

DRAWING TITLE
COMPOSITE DRAWING OF LABORATORY AUTOMATION SYSTEM
3F LAYOUT PLAN

DRAWN BY RW/NL	DATE AUG2023
CHECKED BY KT	DATE AUG2023
SCALE 1:50	JOB NO. BJY
DRAWING NUMBER BS/8515/A/COM/FPE-C6-04/201	REV 2



ELEVATION A
 REFERENCE LAYOUT PLAN:
 BS/8515/A/COM/FPE-C6-04/201

COMPOSITE DRAWING SUBMISSION		
REVISIONS		
NUMBER	DESCRIPTION	DATE
0	FIRST SUBMISSION	APR 2023
1	SECOND SUBMISSION	AUG 2023
2	THIRD SUBMISSION	DEC 2024
3	FOURTH SUBMISSION	JAN 2025

MAIN CONTRACTOR: 中國建築工程(香港)有限公司 CHINA STATE CONSTRUCTION ENGINEERING (HONG KONG) LIMITED	
ARCHITECT: 王歐陽(香港)有限公司 WONG & OUYANG (HK) LTD	
STRUCTURAL ENGINEER: SW	
BUILDING SERVICES ENGINEER: WSP	
LANDSCAPE DESIGNER: ADI	
INTERIOR DESIGNER: V	
MODULAR CONSTRUCTION DESIGNER: 中國海龍建築科技有限公司 CHINA STATE HAILONG CONSTRUCTION TECHNOLOGY COMPANY LIMITED	
MEDICAL CONSULTANT: 中國國際醫療產業發展有限公司 CHINA STATE CONSTRUCTION INT'L MEDICAL INDUSTRY DEVELOPMENT CO., LTD.	
CONTRACT NO. SS K514	
PROGRAMME NO. 001MZ & 116MH	
PROJECT DESIGN AND CONSTRUCTION OF CHINESE MEDICINE HOSPITAL AND GOVERNMENT CHINESE MEDICINES TESTING INSTITUTE IN TSEUNG KWAN O	
DRAWING TITLE COMPOSITE DRAWING OF LABORATORY AUTOMATION SYSTEM ELEVATION A	
DRAWN BY: RW/KL	DATE: AUG2023
CHECKED BY: KT	DATE: AUG2023
SCALE: 1:50	JOB NO.: BJY
DRAWING NUMBER BS/8515/A/COM/FPE-C6-04/901	REV 3

